

The Cattle Range



Slaughter Steer Feedyard Close-Outs

Current & Future (Projected) Closeouts: Profit/(Loss)
For the week ending March 14, 2025

Closeout projections are for cattle placed on feed by a cattle owner at a commercial feedyard and not for cattle owned by a vertically integrated company such as a beef processing company or a feedyard feeding cattle at cost. Cattle cost, cost of gain, and selling price will vary on a regional basis. Cost includes \$15 per head for freight to feedyard.

Typical closeout for un-hedged steers sold this week:

- Placed On Feed 200 days ago = August 26, 2024
- Projected P/(L) based on the futures when placed on feed: **(\$92.86)**

*Cost of 800 lb. steer delivered @ \$242.83 per cwt. + \$15 freight:	\$1,957.64
Feed Cost for 700 lbs. @ \$1.05 per lb.	\$735.00
Interest on cattle cost for 200 days:	\$101.90
Interest on feed cost:	\$19.13
Total Cost & Expense:	\$2,830.62
**Sale proceeds: 1,500 lb. steer @ \$204.00 per cwt:	\$3,060.00
This week's Profit/(Loss) per head:	\$246.33
Profit/(Loss) per head for previous week:	\$169.38
Change from previous week:	+\$76.95
Sale price necessary to breakeven:	\$187.58

* CME Feeder Cattle Index ** USDA Market News

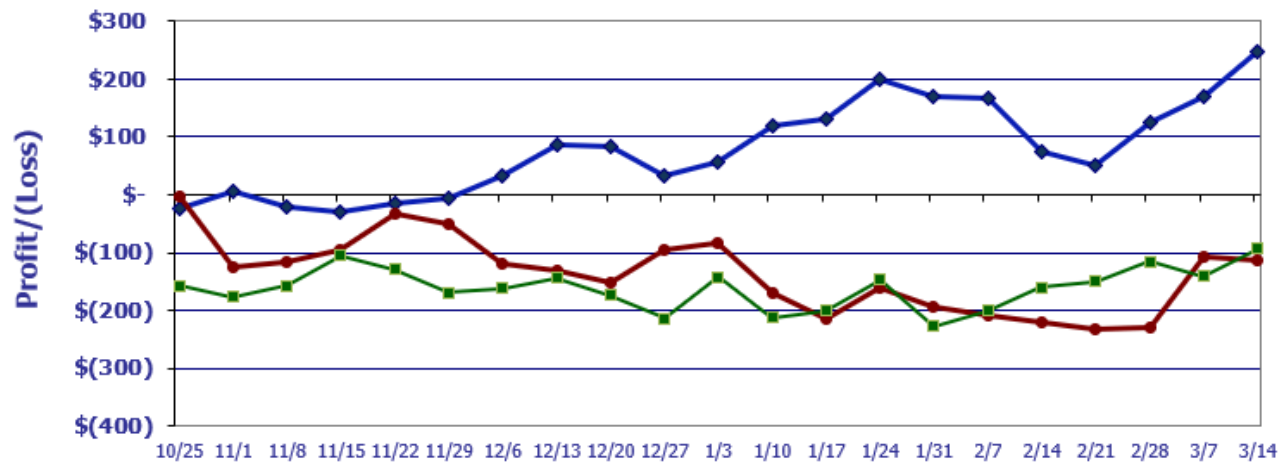
Projected closeout for steers placed on feed this week:

- Projected Sale Date @ 200 days on feed = September 30, 2025

*Cost of 800 lb. steer delivered @ \$281.25 per cwt. + \$15 freight:	\$2,265.00
Feed Cost for 700 lbs. @ \$0.98 per lb.	\$686.00
Interest on cattle cost for 200 days:	\$105.49
Interest on feed cost:	\$15.98
Total Cost & Expense:	\$3,072.47
**Sale proceeds: 1,500 lb. steer @ \$197.27 per cwt:	\$2,959.05
This week's Profit/(Loss) per head:	(\$113.42)
Profit/(Loss) per head for previous week:	(\$106.18)
Change from previous week:	-\$7.24
Sale price necessary to breakeven:	\$204.83

* CME Feeder Cattle Index ** October Live Cattle Futures Contract

Feedyard Close-Outs for the weeks ending...



Closeout for un-hedged steers placed on feed 200 days ago & sold this week: \$246.33
Projection based on the futures when placed on-feed 200 days ago: (\$92.86)
Projection based on the futures for steers placed on-feed this week: (\$113.42)

Feedyard Close-Outs - 5 Year Moving Averages...

