

Slaughter Steer Feedyard Close-Outs

Current & Future (Projected)

For the week ending September 18, 2020

Current & Future (Projected) Feedyard Closeouts: Profit/(Loss)

Closeout projections are for cattle placed on feed by a cattle owner at a commercial feedyard and not for cattle owned by a feedyard and fed at cost or a farmer/feeder utilizing his own feed. Cattle cost, cost of gain, and selling price will vary on a regional basis.

Typical closeout for un-hedged steers sold this week:

- Placed On Feed 165 days ago = April 6th
- Projected P/(L) based on the futures when placed on feed: **(\$53.50)**

Cost of 750 lb. steer delivered @ \$124.20 per cwt:	\$931.50
Feed Cost for 600 lbs. @ \$0.81 per lb.	\$486.00
Interest on cattle cost for 165 days:	\$21.05
Interest on feed cost:	\$5.49
Total Cost & Expense:	\$1,444.05
*Sale proceeds: 1,350 lb. steer @ \$103.85 per cwt:	\$1,401.98

This week's Profit/(Loss) per head: (\$42.07)

Profit/(Loss) per head for previous week: **(\$78.56)**

Change from previous week: **+\$36.49**

Sale price necessary to breakeven: \$106.97

* Friday's 5 Area Daily Weighted Average Direct Negotiated Price

Projected closeout for steers placed on feed this week:

- Projected Sale Date @ 165 days on feed = March 2nd
- Sale Proceeds based on the April Live Cattle Futures Contract

Cost of 750 lb. steer delivered @ \$141.85 per cwt:	\$1,063.88
Feed Cost for 600 lbs. @ \$0.82 per lb.	\$492.00
Interest on cattle cost for 165 days:	\$20.44
Interest on feed cost:	\$4.73
Total Cost & Expense:	\$1,581.04
Sale proceeds: 1,350 lb. steer @ \$118.15 per cwt:	\$1,595.03

This week's Profit/(Loss) per head: \$13.98

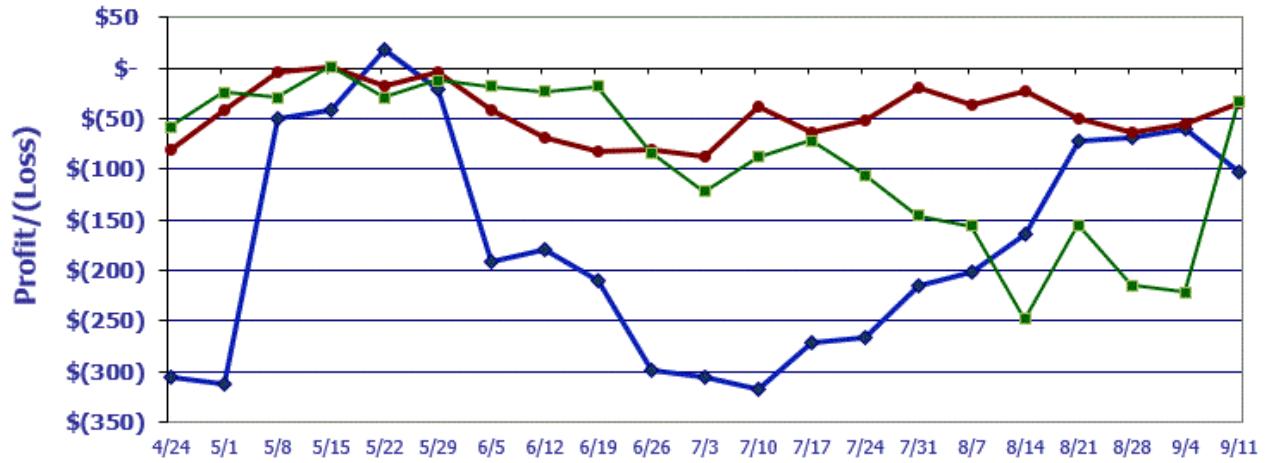
Profit/(Loss) per head for previous week: **(\$33.96)**

Change from previous week: **+\$47.94**

Sale price necessary to breakeven: \$117.11

Feedyard Close-Outs for the weeks ending...

www.cattlerange.com



Typical closeout for hedged steers sold this week: **(\$53.50)**
Typical closeout for un-hedged steers sold this week: **(\$42.07)**
Projected closeout for steers placed on feed this week: **\$13.98**

Feedyard Close-Outs - 5 Year Moving Averages

www.cattlerange.com

