

The Cattle Range



Slaughter Steer Feedyard Close-Outs

Current & Future (Projected) Closeouts: Profit/(Loss)
For the week ending January 9, 2026

Closeout projections are for cattle placed on feed by a cattle owner at a commercial feedyard and not for cattle owned by a vertically integrated company such as a beef processing company or a feedyard feeding cattle at cost. Cattle cost, cost of gain, and selling price will vary on a regional basis. Cost includes \$15 per head for freight to feedyard.

Typical closeout for un-hedged steers sold this week:

- Placed On Feed 190 days ago = July 3, 2025
- Projected P/(L) based on the futures when placed on feed: **(\$89.66)**

*Cost of 800 lb. steer @ \$311.83 per cwt. + \$15 freight:	\$2,509.64
Feed Cost for 700 lbs. @ \$1.08 per lb.	\$756.00
Interest on cattle cost for 190 days:	\$107.78
Interest on feed cost:	\$16.23
Total Cost & Expense:	\$3,389.65
**Sale proceeds: 1,500 lb. steer @ \$232.00 per cwt:	\$3,480.00
This week's Profit/(Loss) per head:	\$90.35
Profit/(Loss) per head for previous week:	(\$5.93)
Change from previous week:	+96.28
Sale price necessary to breakeven:	\$225.98

* CME Feeder Cattle Index ** USDA Market News

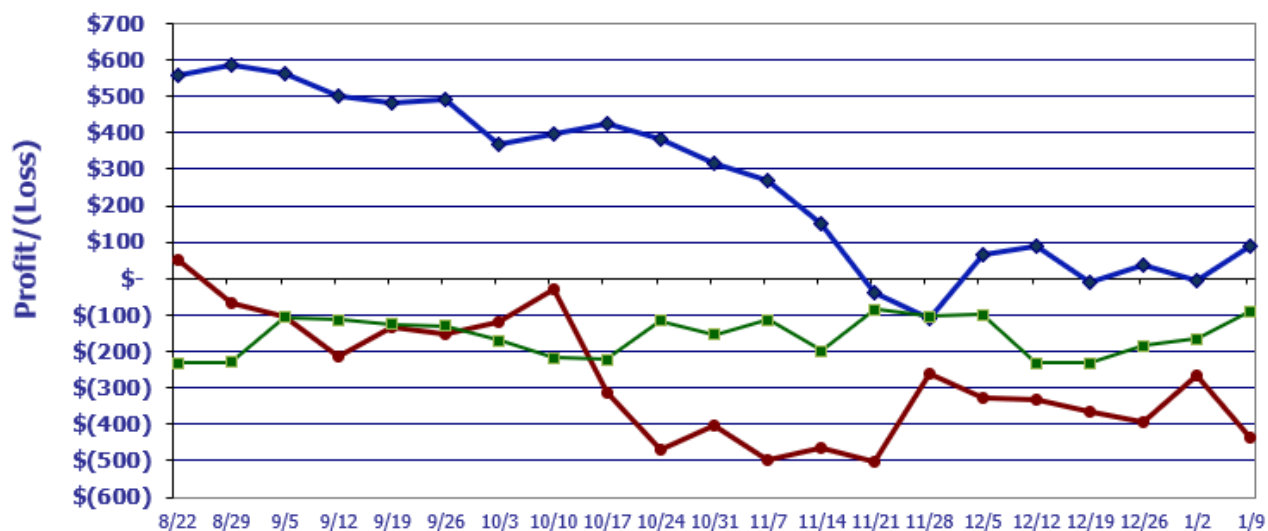
Projected closeout for steers placed on feed this week:

- Projected Sale Date @ 190 days on feed = July 18, 2026

*Cost of 800 lb. steer @ \$368.07 per cwt. + \$15 freight:	\$2,959.56
Feed Cost for 700 lbs. @ \$1.07 per lb.	\$749.00
Interest on cattle cost for 190 days:	\$119.40
Interest on feed cost:	\$15.11
Total Cost & Expense:	\$3,843.06
**Sale proceeds: 1,500 lb. steer @ \$227.12 per cwt:	\$3,406.80
This week's Profit/(Loss) per head:	(\$436.26)
Profit/(Loss) per head for previous week:	(\$268.25)
Change from previous week:	-\$168.01
Sale price necessary to breakeven:	\$256.20

* CME Feeder Cattle Index ** August Live Cattle Futures Contract

Feedyard Close-Outs for the weeks ending...

www.cattlerange.com


Closeout for un-hedged steers placed on-feed 200 days ago & sold this week: **\$90.35**
 Projection based on the futures when placed on-feed 190 days ago: **(\$89.66)**
 Projection based on the futures for steers placed on-feed this week: **(\$436.26)**

Feedyard Close-Outs - 5 Year Moving Averages...

www.cattlerange.com
