

The Cattle Range



# Slaughter Steer Feedyard Close-Outs

Current & Future (Projected)

For the week ending January 10, 2020

---

## Current & Future (Projected) Feedyard Closeouts: Profit/(Loss)

**Closeout projections** are for cattle placed on feed by a cattle owner at a commercial feedyard and not for cattle owned by a feedyard and fed at cost or a farmer/feeder utilizing his own feed. Cattle cost, cost of gain, and selling price will vary on a regional basis.

### Typical closeout for un-hedged steers sold this week:

- Placed On Feed 165 days ago = July 29th
- Projected P/(L) based on the futures when placed on feed: **(\$49.74)**

Cost of 750 lb. steer delivered @ \$141.75 per cwt:	\$1,063.13
Feed Cost for 600 lbs. @ \$0.82 per lb.	\$492.00
Interest on cattle cost for 165 days:	\$28.84
Interest on feed cost:	\$6.67
<b>Total Cost &amp; Expense:</b>	<b>\$1,590.63</b>
<b>Sale proceeds:</b> 1,350 lb. steer @ \$125.00 per cwt:	<b>\$1,687.50</b>
....	
<b>This week's Profit/(Loss) per head:</b>	<b>\$96.87</b>
..	
Profit/(Loss) per head for previous week:	\$113.33
Change from previous week:	-\$16.46
<b>Sale price necessary to breakeven:</b>	<b>\$117.82</b>

---

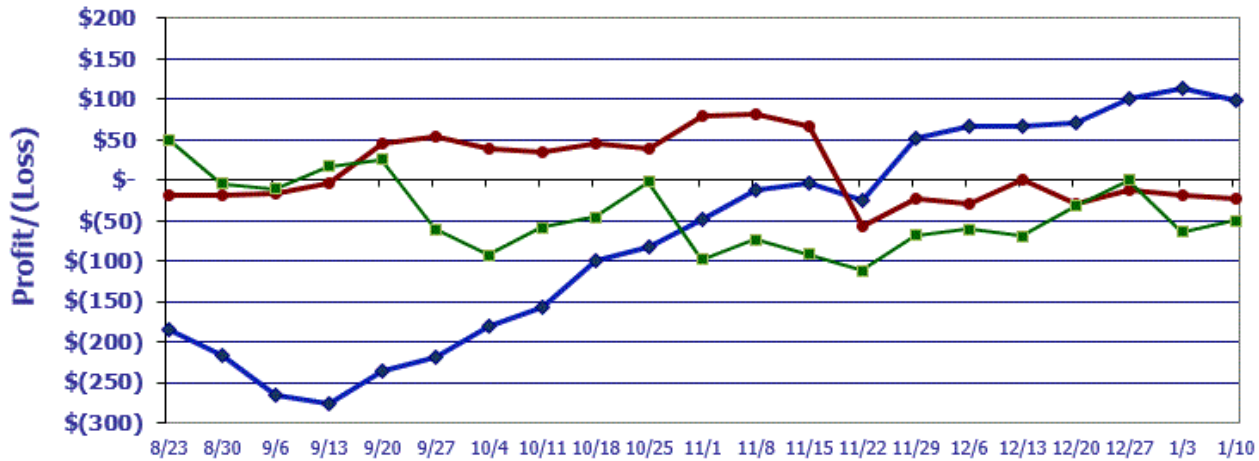
### Projected closeout for steers placed on feed this week:

- Projected Sale Date @ 165 days on feed = June 23rd
- Sale Proceeds based on the June Live Cattle Futures Contract

Cost of 750 lb. steer delivered @ \$147.60 per cwt:	\$1,107.00
Feed Cost for 600 lbs. @ \$0.83 per lb.	\$498.00
Interest on cattle cost for 165 days:	\$28.77
Interest on feed cost:	\$6.47
<b>Total Cost &amp; Expense:</b>	<b>\$1,640.25</b>
<b>Sale proceeds:</b> 1,350 lb. steer @ \$119.78 per cwt:	<b>\$1,617.03</b>
....	
<b>This week's Profit/(Loss) per head:</b>	<b>(\$23.22)</b>
..	
Profit/(Loss) per head for previous week:	(\$18.23)
Change from previous week:	-\$4.99
<b>Sale price necessary to breakeven:</b>	<b>\$121.50</b>

## Feedyard Close-Outs for the weeks ending...

[www.cattlerange.com](http://www.cattlerange.com)



**Typical closeout for hedged steers sold this week:** **(\$49.74)**  
**Typical closeout for un-hedged steers sold this week:** **\$96.87**  
**Projected closeout for steers placed on feed this week:** **(\$23.22)**

## Feedyard Close-Outs - 5 Year Moving Averages

[www.cattlerange.com](http://www.cattlerange.com)

