



# Slaughter Steer Feedyard Close-Outs

Current & Future (Projected)  
For the week ending May 21, 2021

## Current & Future (Projected) Feedyard Closeouts: Profit/(Loss)

**Closeout projections** are for cattle placed on feed by a cattle owner at a commercial feedyard and not for cattle owned by a feedyard and fed at cost or a farmer/feeder utilizing his own feed. Cattle cost, cost of gain, and selling price will vary on a regional basis.

### Typical closeout for un-hedged steers sold this week:

- Placed On Feed 150 days ago = December 22nd
- Projected P/(L) based on the futures when placed on feed: **(\$83.96)**

Cost of 750 lb. steer delivered @ \$138.60 per cwt:	\$1,039.50
Feed Cost for 600 lbs. @ \$1.08 per lb.	\$648.00
Interest on cattle cost for 165 days:	\$18.16
Interest on feed cost:	\$5.66
<b>Total Cost &amp; Expense:</b>	<b>\$1,711.31</b>
<b>Sale proceeds:</b> 1,350 lb. steer @ \$119.70 per cwt:	<b>\$1,615.95</b>
<b>This week's Profit/(Loss) per head:</b>	<b>(\$95.36)</b>
Profit/(Loss) per head for previous week:	(\$97.59)
Change from previous week:	+\$2.23
<b>Sale price necessary to breakeven:</b>	<b>\$126.76</b>

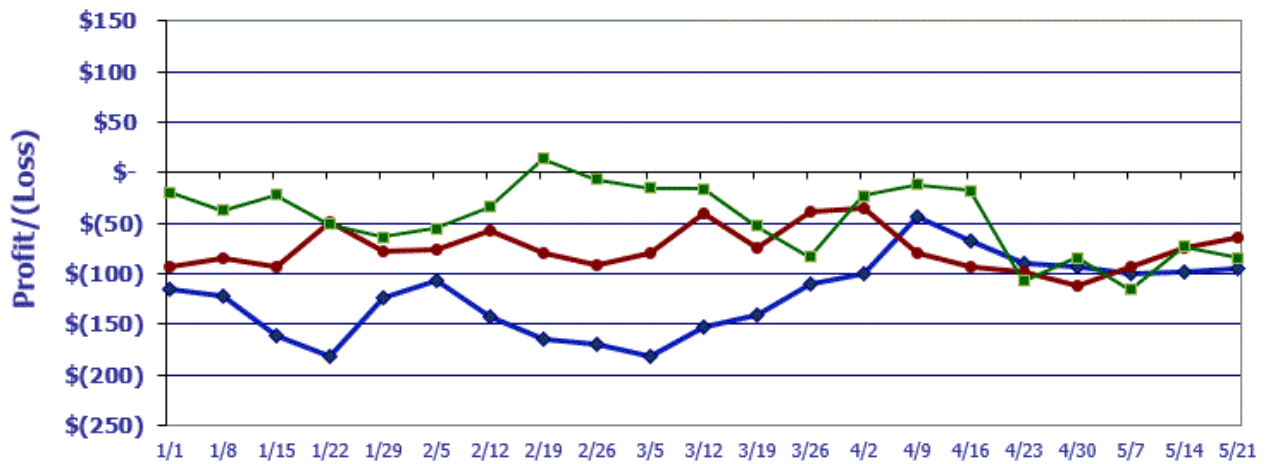
### Projected closeout for steers placed on feed this week:

- Projected Sale Date @ 150 days on feed = October 18th
- Sale Proceeds based on the October Live Cattle Futures Contract

Cost of 750 lb. steer delivered @ \$132.85 per cwt:	\$996.38
Feed Cost for 600 lbs. @ \$1.22 per lb.	\$732.00
Interest on cattle cost for 165 days:	\$17.40
Interest on feed cost:	\$6.39
<b>Total Cost &amp; Expense:</b>	<b>\$1,752.17</b>
<b>Sale proceeds:</b> 1,350 lb. steer @ \$125.05 per cwt:	<b>\$1,688.18</b>
<b>This week's Profit/(Loss) per head:</b>	<b>(\$63.99)</b>
Profit/(Loss) per head for previous week:	(\$73.90)
Change from previous week:	+\$9.91
<b>Sale price necessary to breakeven:</b>	<b>\$129.79</b>

## Feedyard Close-Outs for the weeks ending...

[www.cattlerange.com](http://www.cattlerange.com)



**Typical closeout for hedged steers sold this week:** **(\$83.96)**  
**Typical closeout for un-hedged steers sold this week:** **(\$95.36)**  
**Projected closeout for steers placed on feed this week:** **(\$63.99)**

## Feedyard Close-Outs - 5 Year Moving Averages

[www.cattlerange.com](http://www.cattlerange.com)

