



Slaughter Steer Feedyard Close-Outs
Current & Future (Projected) Closeouts: Profit/(Loss)
For the week ending October 11, 2024

Closeout projections are for cattle placed on feed by a cattle owner at a commercial feedyard and not for cattle owned by a vertically integrated company such as a beef processing company or a feedyard feeding cattle at cost. Cattle cost, cost of gain, and selling price will vary on a regional basis. Cost includes \$15 per head for freight to feedyard.

Typical closeout for un-hedged steers sold this week:

- Placed On Feed 180 days ago = April 14, 2024
- Projected P/(L) based on the futures when placed on feed: **(\$326.90)**

*Cost of 800 lb. steer delivered @ \$244.57 per cwt. + \$15 freight:	\$1,971.56
Feed Cost for 600 lbs. @ \$1.06 per lb.	\$636.00
Interest on cattle cost for 180 days:	\$92.37
Interest on feed cost:	\$14.90
Total Cost & Expense:	\$2,714.82
**Sale proceeds: 1,400 lb. steer @ \$187.50 per cwt:	\$2,625.00
This week's Profit/(Loss) per head:	(\$89.82)
Profit/(Loss) per head for previous week:	(\$121.47)
Change from previous week:	+\$31.65
Sale price necessary to breakeven:	\$193.92

* CME Feeder Cattle Index ** USDA Market News

Projected closeout for steers placed on feed this week:

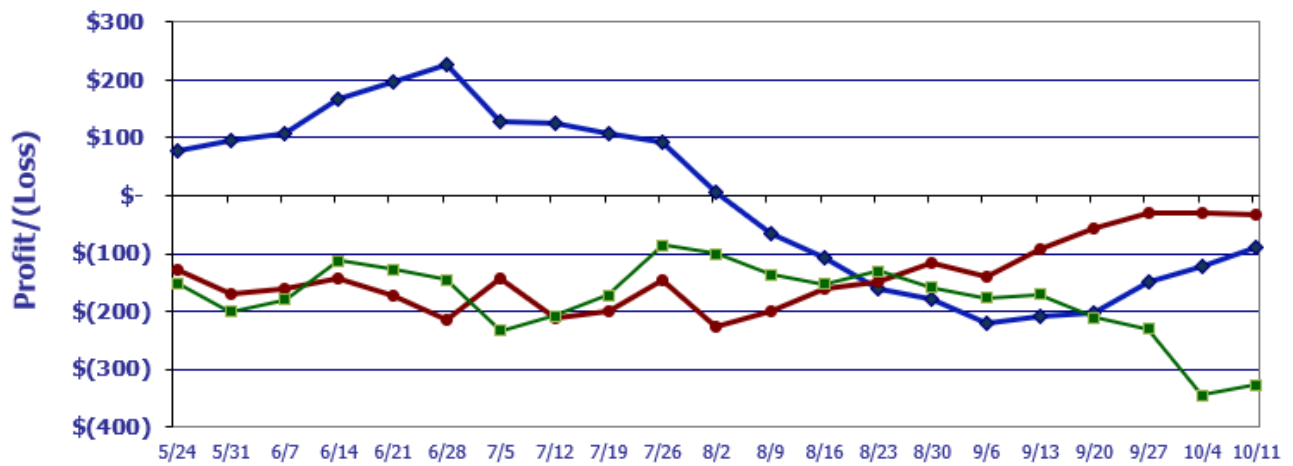
- Projected Sale Date @ 180 days on feed = April 9, 2025

*Cost of 800 lb. steer delivered @ \$250.05 per cwt. + \$15 freight:	\$2,015.40
Feed Cost for 600 lbs. @ \$0.94 per lb.	\$564.00
Interest on cattle cost for 180 days:	\$89.45
Interest on feed cost:	\$12.52
Total Cost & Expense:	\$2,681.37
**Sale proceeds: 1,400 lb. steer @ \$189.12 per cwt:	\$2,647.68
This week's Profit/(Loss) per head:	(\$33.69)
Profit/(Loss) per head for previous week:	(\$29.96)
Change from previous week:	(\$3.73)
Sale price necessary to breakeven:	\$191.53

* CME Feeder Cattle Index ** April Live Cattle Futures Contract

Feedyard Close-Outs for the weeks ending...

www.cattlerange.com



Closeout for un-hedged steers placed on feed 180 days ago & sold this week: **(\$89.82)**
 Projection based on the futures when placed on feed 180 days ago: **(\$326.90)**
 Projection based on the futures for steers placed on-feed this week: **(\$33.69)**

Feedyard Close-Outs - 5 Year Moving Averages...

www.cattlerange.com

