

The Cattle Range



Slaughter Steer Feedyard Close-Outs

Current & Future (Projected) Closeouts: Profit/(Loss)
For the week ending March 7, 2025

Closeout projections are for cattle placed on feed by a cattle owner at a commercial feedyard and not for cattle owned by a vertically integrated company such as a beef processing company or a feedyard feeding cattle at cost. Cattle cost, cost of gain, and selling price will vary on a regional basis. Cost includes \$15 per head for freight to feedyard.

Typical closeout for un-hedged steers sold this week:

- Placed On Feed 200 days ago = August 19, 2024
- Projected P/(L) based on the futures when placed on feed: **(\$141.64)**

*Cost of 800 lb. steer delivered @ \$243.99 per cwt. + \$15 freight:	\$1,966.92
Feed Cost for 700 lbs. @ \$1.06 per lb.	\$742.00
Interest on cattle cost for 200 days:	\$102.39
Interest on feed cost:	\$19.31
Total Cost & Expense:	\$2,830.62
**Sale proceeds: 1,500 lb. steer @ \$200.00 per cwt:	\$3,000.00
This week's Profit/(Loss) per head:	\$169.38
Profit/(Loss) per head for previous week:	\$126.08
Change from previous week:	+\$43.30
Sale price necessary to breakeven:	\$188.71

* CME Feeder Cattle Index ** USDA Market News

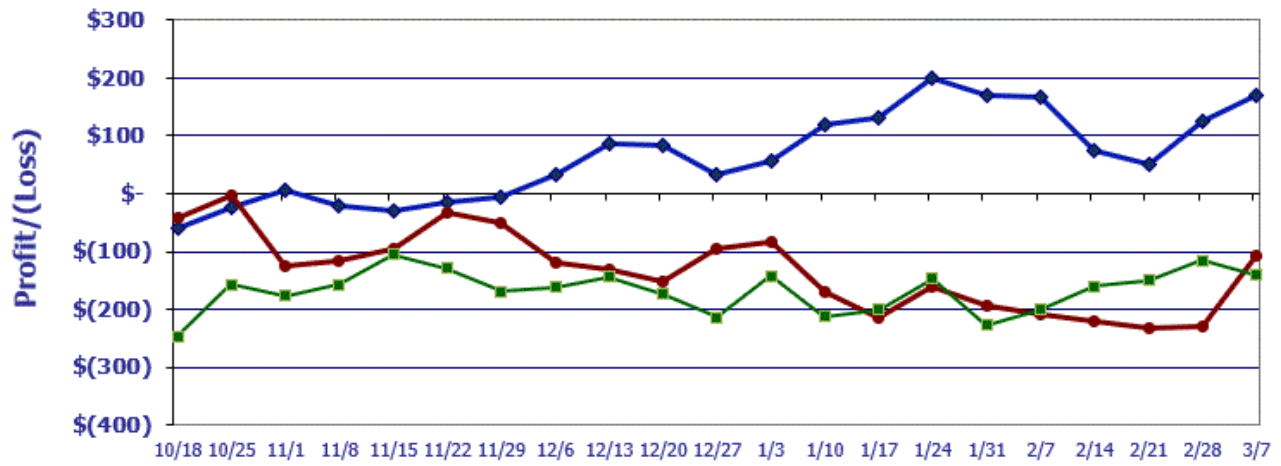
Projected closeout for steers placed on feed this week:

- Projected Sale Date @ 200 days on feed = September 23, 2025

*Cost of 800 lb. steer delivered @ \$276.09 per cwt. + \$15 freight:	\$2,223.72
Feed Cost for 700 lbs. @ \$0.99 per lb.	\$693.00
Interest on cattle cost for 200 days:	\$103.57
Interest on feed cost:	\$16.14
Total Cost & Expense:	\$3,036.43
**Sale proceeds: 1,500 lb. steer @ \$195.35 per cwt:	\$2,930.25
This week's Profit/(Loss) per head:	(\$106.18)
Profit/(Loss) per head for previous week:	(\$228.23)
Change from previous week:	+\$122.05
Sale price necessary to breakeven:	\$202.43

* CME Feeder Cattle Index ** October Live Cattle Futures Contract

Feedyard Close-Outs for the weeks ending...



Closeout for un-hedged steers placed on feed 180 days ago & sold this week: \$169.38
Projection based on the futures when placed on-feed 200 days ago: (\$141.64)
Projection based on the futures for steers placed on-feed this week: (\$106.18)

Feedyard Close-Outs - 5 Year Moving Averages...

